

# Winter 2022 Newsletter

## New Year, New Career



It's a new year – a great time to begin a new career!

We have many positions open from clinical, and administrative, to management positions across the state of Washington. Many also offer hiring bonuses!

If you're looking for a career that helps your community and makes you feel good, consider looking at our current open positions and apply today:  
<https://lifelineconnections.org/career/>

Some current openings include:

- **Mental Health Professional**  
(Bellingham and Vancouver, WA)
- **Substance Use Professional/Trainee**  
(Bellingham and Vancouver, WA)
- **C.N.A./M.A.**  
(Vancouver, WA)
- **Residential Aide**  
(Vancouver, WA)
- **Peer Support Specialist**  
(Aberdeen and Vancouver, WA)
- **Withdrawal Management/Sobering Aide** (Vancouver, WA)

You may also send [recruiting@lifelineconnections.org](mailto:recruiting@lifelineconnections.org) your resume and reference the posting ID.

## Lifeline Connections' Interim CEO Looks Forward to a Bright Future

Meet Joe Foster, our Interim CEO and current Vice President of Finance and Operations. Joe came to Lifeline Connections in 2015 after spending four years at Concordia University in Portland, OR.

In late October, Joe was given the role of Interim CEO after former CEO of nine years, Jared Sanford moved to a different state and different agency. We had a moment to ask Joe a few questions about how this new role and what 2022 will bring for Lifeline Connections and here's what he said.

**Q:** What additional responsibilities to your existing financial and operations-based position has this brought?

**A:** The Interim CEO role has given me the opportunity to work more closely with our volunteer board of directors, who are passionate about the work Lifeline does in WA and who are eager to contribute. This interim role has also brought the responsibility of encouraging and promoting new ideas across the agency. This is the fun part – encouraging staff to dream big and try new things that will support our patients, our staff, and our agency.

**Q:** Where do you see Lifeline Connections headed in 2022?

**A:** I see 2022 as a year to build a strong foundation and “launching pad”, so to speak. Lifeline has grown significantly in the last 7 years, both in geographic locations and in scope of services, and now we are also on the path to become a Certified Community Behavioral Health Clinic (CCBHC), which includes a certain amount of growth as well. In 2022, let's consider how this growth creates an opportunity for us. Let's look at our diverse programs and our dedicated teams and invest in supporting them further in a way that focuses on the outcomes we want to see for our patients.

**Q:** What perspective on the agency has this interim position given you?

**A:** This role has deepened my appreciation for our leadership team at Lifeline, as I get to see even more how much they care about our patients and our mission and how seriously they take their positions. Our leaders work hard, take ownership of their programs, and want to see our patients and our staff flourish. I've also gained a wider perspective on how whole person care is valued at Lifeline. We know our patients have complex needs, and often needs that have gone unaddressed for a long time, and we are eager and equipped to meet those needs. I am excited for the CCBHC model and for work being done at the State level to improve integrated and whole-person care, and know Lifeline will be on the forefront of delivering excellent care to our patients.

Thank you Joe! We look forward to a bright future here at Lifeline Connections in 2022 and beyond!

## Continued Generosity in the Time of COVID for Our Programs

Your generosity means so much to us! Throughout 2021 we continued to receive so much support from our community partners. We could not be more grateful because we know you understand that substance use and mental health treatment centers need ongoing support now more than ever.

In 2021, the following organizations came through for us and our patients. Thank you all for your dedication to our community!

[Beacon Health Options](#) – Jail transition and peer support program

[Community Foundation for SW Washington](#) – Support for Camp Mariposa®

[KMR Group](#) – Funding for the Recovery Resource Center

[Clark County Realtors Foundation](#) – Items for Camp Mariposa® kids at Camp Mariposa®

[Firstenburg Foundation](#) – Basketball court and fencing at Women's Recovery Center

[Department of Commerce](#) – Diapers and baby items for Pregnant & Parenting Women's program



## Integrated Care for MAT Patients

Our Integrated Care Team has been a welcome addition, especially in the last year to the [Medication Assisted Treatment](#) program's patients in Clark County. Originally this team was brought in to help MAT patients receive medical care for Hepatitis-C.

Not only is this team treating these patients but there are now some that are cured from Hepatitis-C.

In addition to that, our Integrated Care Team expanded to provide general medical care once per week in Men's Residential. These weekly "residential rounds" have reduced the need to send patients to urgent care which is a appreciated change during the pandemic.



## Recovery Resource Center Helps Those Experiencing Homelessness

In December, the Recovery Resource Center partnered once again with Recovery Café Clark County to create a donation drive to help those experiencing homelessness.

Many items requested were hand warmers, masks, blankets, sleeping bags and various toiletries and personal hygiene items. Together with the power of our incredibly passionate volunteers, employees and sponsors they beat their goal of 300! On December 12<sup>th</sup>, 330 totes were distributed around the greater Vancouver area.

Many thanks to our sponsors: [Molina Healthcare](#), [Recovery Café Clark County](#), [KMR Group](#) and [K&M Drive-In](#). We look forward to continuing this community outreach for our fifth time this November.





**Lori Young, VP of Restored & Revived with Jeff Zawada, Fund Development Director, Lifeline**

## Restored & Revived: An Asset to Our Community

When individuals are in an inpatient treatment setting it's hard to be away from loved ones during the holidays. However, when these patients are women and women with their young children, it's even more difficult.

So when Lori Young, VP of [Restored & Revived](#) reached out with the desire to help give these patients a special holiday – we were thrilled to say the least. Lori's organization held their 12<sup>th</sup> annual Give to Give event and thanks to the generosity received, each of them felt special. The women in our [Women's Recovery Center](#) and [Pregnant & Postpartum Women's Program](#) and their children were given stockings and other gifts such as STEM toys, puzzles, clothing and personal hygiene items.

This organization is an important resource that helps our community in many ways. Their mission is to break the chains of substance use by providing mentorship to those incarcerated and creative support for their children and families.

Thank you to Restored & Revived, their employees and volunteers for creating special memories for our hard working patients.

## Men's Low-Intensity Residential Treatment Is Now Open in Bellingham, WA

[Lifeline Connections](#) in partnership with the [Opportunity Council](#) is excited to announce the opening of a [Men's Low-Intensity Residential Program](#). This program provides additional recovery support services in the North Sound region. Further, it provides a safe, stable home for up to 16 individuals identifying as male while they receive the tools necessary to begin their transition back into the community.

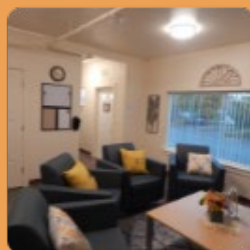
Staff is on-site 24/7 to ensure everyone's safe recovery. Residents participate in mandatory treatment hours each week in support of their overall mission for wellness. Treatment services include:

- Mental health and substance use treatment
- Social skills development
- Vocational and recreational programming.

This program is one of a handful in all of Washington designed to address co-occurring conditions (mental health and substance use) at this level of care.

Service priorities focus on individuals involved in drug court, and then to other North Sound residents that qualify. In addition, the full continuum of care offered by the addition of this level of treatment is to prevent admissions and readmissions to jail.

The project is the culmination of strong community partnerships and funders including the Opportunity Council, who developed the facility and will continue to own and maintain the property. Additional generous support came from Bellingham Home Fund, Chuckanut Health Foundation, City of Bellingham, North Sound Behavioral Health Administrative Services Organization (BH-ASO), PeaceHealth, River Styx Foundation, Rotary Club of Bellingham, The Ferlin Family, Thomas & Martina Horn Foundation, Washington State Department of Commerce Behavioral Health Facilities Fund, Whatcom County Health Department, the Taxpayers of Washington State and Lifeline Connections.





## Alex's Journey to Recovery



My name is Alex.

I am in long term recovery, which means I have not had a drink or used any mind altering substance since January 10th 2010.

I started drinking at the age of

17. My goal in life at that point was to feel worth something, to be accepted which lead to drugs and alcohol. As a result of these behaviors, I began to lie, steal, cheat and form abusive relationships.

I checked myself into Detox at [Lifeline Connections](#) knowing full well that I was done. I am truly grateful for the opportunity to have been in an in-patient treatment center and learn about my disease and a solution. The more I talk about treatment the more I realize what it has done for my recovery.

Sobriety has allowed me the amazing opportunity to see life through a clear lens. I now have the opportunity to grow and connect with so many new people in Vancouver's amazing recovery community. One of my favorite things to do now is speak at treatment centers. It is such an honor to be able to give back what was so freely given.

I pray every day for vision, a divine choice and an ability to filter truth. So that I may carry out God's will. God will only do for me what I cannot do for myself. He has taught me that through suffering I learn perseverance, through perseverance I develop character and through my character I achieve hope. Some days are easier than others, but what counts is that when I lay my head down at night, I know that my slate is clear.

## Substance Use Outpatient Program Holds Donation Drive for Foster Teens



Each December our [Substance Use Outpatient Program](#) holds a gift card drive for the [Washington State Department of Children, Youth and Families'](#) foster teens. Often times, these teenaged foster children are the most forgotten. When November arrived, the team in outpatient substance use treatment was already receiving donations from Lifeline Connections employees.

The goal each year is to raise \$1000. We are so excited and proud to share that the employees of Lifeline Connections gave a total of \$2500 in gift cards! The devotion our agency has to its community is heartwarming.

Thank you to all that participated – you have brought so much joy to a local foster teen.

## Do You Have a Recovery Story to Share?

Many times people find hope and inspiration in the stories that others share and each person's journey is unique and if there's something relatable to an individual that has thought about seeking treatment, your story may be what drives them to make that call. Submit your story here: <https://lifelineconnections.org/recovery-story-submission/>



## How You Can Help

Lifeline is a tax-exempt nonprofit organization. Your donations make recovery possible by ensuring people get help when they need it.

Giving is easy! Visit [www.lifelineconnections.org/how-you-can-help/](http://www.lifelineconnections.org/how-you-can-help/) for easy, secure on-line giving. You can also contact us at [development@lifelineconnections.org](mailto:development@lifelineconnections.org) or call (360) 397-8246 ext. 30548 to discuss how your gift can make the most impact. Thank you!

