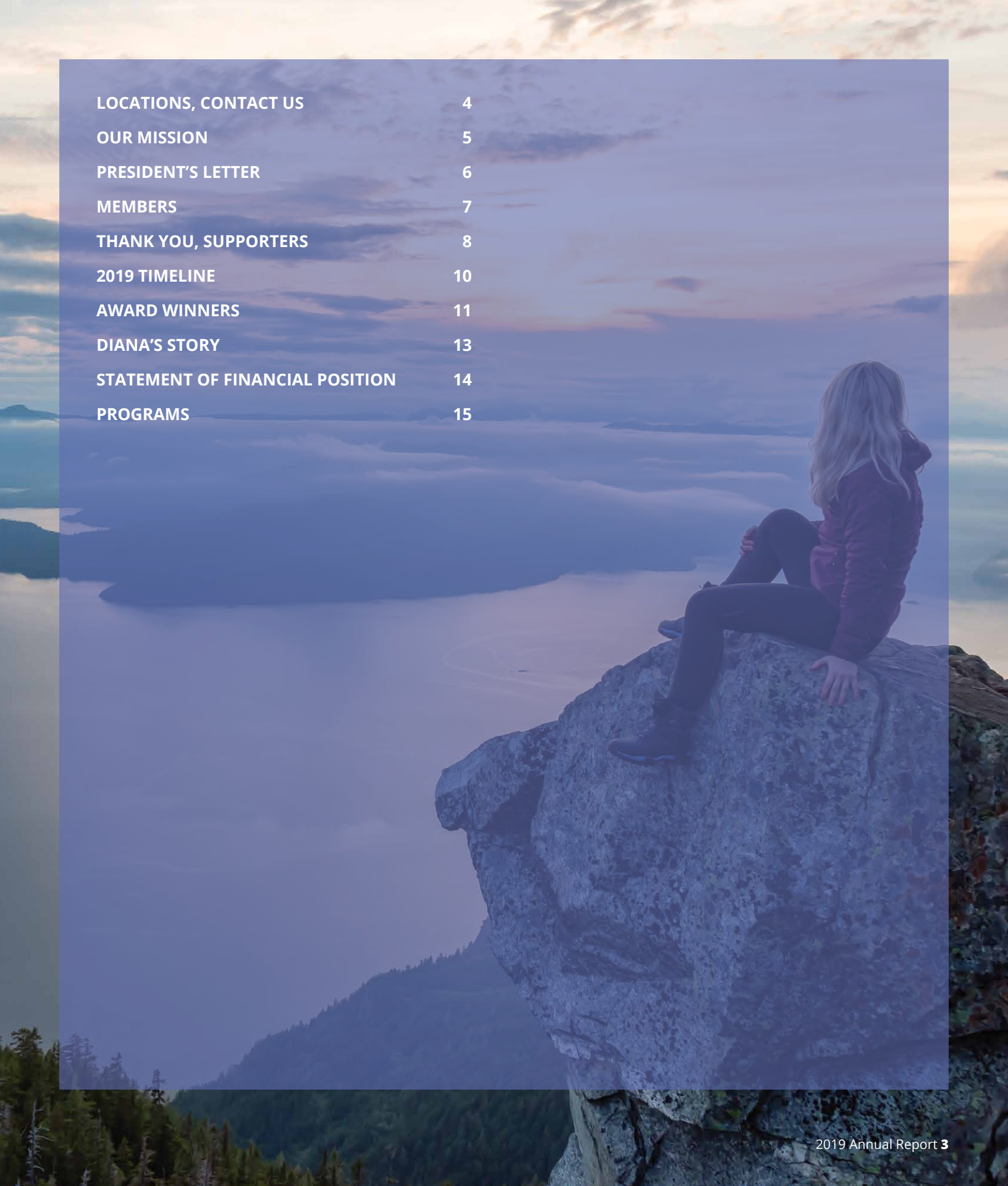




2019 ANNUAL REPORT



Lifeline Connections is a private,
not for profit 501(c)(3) corporation
that has served the community since 1962.

A person with long blonde hair, wearing a dark jacket and pants, is sitting on a large, grey rock. They are looking out over a vast landscape of water and mountains under a sunset sky. The scene is bathed in the soft, warm light of the setting sun, with clouds catching the light. The overall mood is peaceful and contemplative.

LOCATIONS, CONTACT US	4
OUR MISSION	5
PRESIDENT'S LETTER	6
MEMBERS	7
THANK YOU, SUPPORTERS	8
2019 TIMELINE	10
AWARD WINNERS	11
DIANA'S STORY	13
STATEMENT OF FINANCIAL POSITION	14
PROGRAMS	15



LOCATIONS

VA CAMPUS OFFICE

1601 E. Fourth Plain Boulevard
Building #17
Vancouver, WA 98661
(360) 397-8246

ABERDEEN OFFICE

311 South I Street
Aberdeen, WA 98520
(360) 787-9319

BELLINGHAM OFFICE

4120 Meridian Street
Suite 220
Bellingham, WA 98226
(360) 922-3030

CAMAS OFFICE

329 Lechner Street
Camas, WA 98607
(360) 524-7924

CENTRALIA OFFICE

1611 Kresky Avenue
Suite 114
Centralia, WA 98531
(360) 388-4048

MERIWETHER PLACE

6221 NE Fourth Plain Blvd, Suite 120
Vancouver, WA 98661
(360) 989-3743

MT. VERNON

2105 Continental Place, Suite A
Mt Vernon, WA 98273
(360) 399-6900

ORCHARDS OFFICE (EAST VANCOUVER)

11719 NE 95th Street
Suite A
Vancouver, WA 98682
(360) 984-5511

SOUTH BEND OFFICE

1006 Robert Bush Dr. West
South Bend, WA 98586
(360) 787-9319

RECOVERY RESOURCE CENTER

9317 NE Hwy 99, Suite M
Vancouver, WA 98665
(360) 787-9315

WOMEN'S RECOVERY CENTER

(360) 690-3069

CONTACT US

MAILING ADDRESS

P.O. Box 1678
Vancouver, WA 98668
Phone: (360) 397-8246

EMAIL

info@lifelineconnections.org

WEBSITE

lifelineconnections.org

DONATE

As a nonprofit organization Lifeline Connections relies on donations to help accomplish its mission. Become a donor today and help individuals find hope, help and Healing.

VISIT OUR SITE TO DONATE

[lifelineconnections.org/
how-you-can-help/](http://lifelineconnections.org/how-you-can-help/)

OUR MISSION

WE ARE

OPENING DOORS

Lifeline Connections helps adults and youth find hope and healing. We treat substance use and mental health conditions with deep compassion and steadfast care.

More than

5,000 people

every year find the help they need at Lifeline Connections.

Since 1962, we've served our community with behavioral health treatment services grounded in proven practices. We're a private, non-profit 501(c)(3) corporation headquartered in Vancouver, WA.

WE OFFER

FULL-SPECTRUM CARE

With skillful efficiency and a passion for healing, we can help no matter where people are in their recovery journey. Our professional staff includes:

- Board-certified psychiatrist and addictionologist
- Psychiatric nurse practitioners
- State-certified and licensed mental health professionals, social workers and substance use disorder professionals
- Registered and licensed practical nurses
- Counselors who are bilingual and fluent with American Sign Language
- Peer support/recovery coaches

WE USE

EVIDENCE-BASED TREATMENTS

We're licensed by the Washington State Department of Health and accredited by the Commission on Accreditation of Rehabilitation Facilities (CARF). Our curricula have passed review by the Substance Abuse and Mental Health Services Administration (SAMHSA). The curricula and treatment methods used at Lifeline Connections have passed rigorous independent review and meet the standards of evidence-based practices.





2020 will be full of great opportunities for more growth and services to the communities we serve.

- Matthew Lee



I appreciate the opportunity to be part of the Lifeline Connections; I help in a small way. For those individuals who commit to the services offered by Lifeline Connections they will see overwhelming changes in their lives. It's truly amazing to see these changes firsthand.

Lifeline Connections continues to help people within Washington State who are struggling with mental health conditions, drug, and alcohol use. Lifeline provides adult residential, court treatment, youth outpatient treatment, detoxification services and sobering programs for many of our neighbors and family in across the state of Washington.

We prepare this report annually to provide our communities an update on Lifeline Connections and the services provided to residents of Washington. The Board of Directors

continues to be inspired by the efforts of Lifeline's staff.

The year of 2019 provided many opportunities to grow Lifeline Connections' service areas including:

- Medication assisted treatment in Whatcom and Skagit counties expanded by a grant received.
- New Mt. Vernon, WA outpatient location opened in March.
- Separated our substance use disorder residential program into two residential programs, a 44 bed men's program and a 16 bed women's program.
- Held first Camp Mariposa for children effected by family substance use.
- Purchased a single-family home to be used as a recovery residence for women.

- Started our Connections Café and Catering business venture, to provide employment and job skills training to men and women in recovery.
- And Lifeline is continuing to work on a Crisis Stabilization and Triage Center to provide a safe environment for people with an immediate mental health issue.

2020 will be full of great opportunities for more growth and services to the communities we serve.

The Board of Directors greatly thanks all of you who support our communities with hope, help, and Healing.

It is my pleasure to serve on this Board of Directors.

Matthew Lee

*President
Board of Directors*

BOARD OF DIRECTORS

Matt Lee
Opsahl/Dawson Certified Public Accountants
President

Edie Blakley
Clark College Career Services
Vice President

Brian MacKenzie
Gunn MacKenzie Law Firm
Treasurer

Kasandra Early
Self Employed Business Contractor
Secretary

Ginger Schmidt
Riverview Bank
Director

Rusty Williams
Cost Management Services, Inc.
Director

Harry White
Waddell & Reed Financial Advisors
Director

Dr. Robert Poole
Retired Psychologist
Director

David Artz
Retired Attorney
Director

THE SOBERING SERVICES UNIT ADVISORY BOARD

Kathy McNicholas
Vancouver Police Department
Chair

Marc Muhr
Clark County EMS
Vice Chair

Peggy Sheehan
Vancouver City
Member

Kate Budd
Council for the Homeless
Member

CRISIS STABILIZATION ADVISORY BOARD

Peggy McCarthy
NAMI SW WA ED
Chair

Jan Bothwell
NAMI SW WA
Vice-Chair

Jeffrey Hite
Beacon Health Options
Member

Dave Kester
PeaceHealth
Member

Marc Muhr
Clark County EMS
Member

Chiara Caballero
NAMI SW WA
Member

Brad Berry
CVAB (Consumer Voices are Born)
Member

RECOVERY RESOURCE CENTER ADVISORY BOARD

Tom Breitenbauch
Chair

Randy Strutz
Vice Chair

John Dyer
Member

Julie Jo Cole
Member

Lyn Anderson
Member

Orvie Wake
Member

MANAGEMENT TEAM

Jared Sanford, MPA
Chief Executive Officer

Brandy Branch, LMHC, SUDP
Chief Clinical Officer

Joe Foster, MBA, CMA
Chief Financial Officer

Remi Smith, MSW, MBA
Chief Quality Officer

Arianna Kee, LMHC, SUDP
Deputy Clinical Officer

Maria Calvert, BS, SUDP
Program Director, Substance Use Disorder Outpatient Services

Phillip Muir, BS, SUDP
Program Director, Substance Use Disorder Residential Services

Amber Martin, RN
Program Director, Withdrawal Management Services

Kaylee Collins, LPN
Program Director, Medication Assisted Treatment Services

Pat Upshaw, BA, SUDP
Program Director, Therapeutic Specialty Courts Outpatient Services

Jessica Hall, PHR
Human Resources Director

Jeri Mortimore, CFRE
Development Director

Jessica Spencer, LMHC, SUDP
Program Director, Mental Health Services

Brianna Dalton, LMHC
Program Director, Community Based Treatment Services

Carolyn Mason, MS, SUDP
Regional Program Director, Bellingham/Mt. Vernon Offices

Kim Nuesse, BS, SUDP
Program Director, Women's Recovery Center

Lisa Cornell, LMHC
Regional Program Director, Aberdeen/South Bend/Centralia Offices

Kara Seibert, LICSW
Program Director, Crisis Stabilization Services

Liana Hategan, MD
Medical Director

Dan Jass, LMFT
Program Director, Children and Youth Services

THANK YOU LIFELINE SUPPORTERS!

FOR FISCAL YEAR ENDING JUNE 30, 2019

72nd Avenue Bargain Center	Carol Taylor	Diana Grossarth
Association of Fundraising Professionals, Oregon and SW WA	Carolyn Mason	Diane Shelton
Ahleah Vasquez	Cascade Pacific Action Alliance	Diane Stockbridge
Aideet Pineda	Cash and Carry	DLC Architecture, LLC
Alan Gozart	Cassie Bettis	Edie Blakley
Amazon Smile	Cecille Hill	Elijah Pahl
AmeriCorps* VISTA - Clark County	Charis Fund	Eluna - Camp Mariposa
AmeriCorps* VISTA - Whatcom County	Chelsea House	Firstenburg Foundation
Amerigroup Washington, Inc	Child and Adolescent Clinic	Fred Perryman
Amy Myers	Chris Attaway	Free Geek
Angie Ballantyne	Christy Bettis	Fuller Group
Ann Bray	Cianna Porter	Gabriel Mon
Anthony Glavin	Cindy Cox	Ginger A Schmidt
Beacon Health Options	Cindy Hayes	Giving Circle - Nonprofit Network of Southwest Washington
Bernard and Kasandra Early	City of Vancouver Affordable Housing Fund	Great Rivers Behavioral Health Organization
Beth A Groshans	City of Vancouver HOME	Greater Columbia Behavioral Health Organization
Bethany Frailey	Clark County Department of Community Services	Grocery Outlet
Birch Community Services	Clark County Food Bank	Gunn Mackenzie, PLLC
BNSF Railway Foundation	Clark County HOME	Hallmark Resort and Spa
Bob and Jan Verrinder	Clark County Mental Health Local Sales Tax	Harold Raines
BP Foundation	Clark County Therapeutic Specialty Courts	Harry White
Brake Zone	Clinton Rushing	Hayley Scott
Brandenburg Law Firm	Community Health Plan of Washington	Heed Group, LLC
Brian MacKenzie	Corrie Duitman	Holly Blondino
Brian Mackenzie (Mac)	Creative Paper Crafting, Inc	James and Nola Burke
Bridget C Ball Cabral	Dave and Buster's	James Baker
Brittany Davis	Deanna Green	James Goodman
Burgerville	Dellan Redjou	Jaqueline Ryan
Camas-Washougal Community Chest		Jared Sanford
Carol and Charles Mackey		

Jay and Mary Renaud	Matt Lee	Seabrook Community Foundation
Jean M Gregory	Michele Houck	Shannon Benson
Jean Sanders	Mickaly Richmond	Shannon Edgel
Jeana Perkins	Mod Pizza	Share
Jeanie Lunsford-Batson	Molina Healthcare of Washington	Sharon Pfaff
Jeannie Bettis	Nana's Tiny Cakes	Sharon Wylie
Jeff Taylor	Nancy Pascua	Smith-Root
Jene Klamfoth	Nancy Scott	Source Climbing Center
Jenny Estes	Network for Good	Southwest Washington Accountable Community of Health
Jeri Mortimore	Nonstop Wellness	Spokane Behavioral Health Organization
Jessica Hall	North Central Behavioral Health Organization	State of Washington Employees
John and Lynne Hart	North Sound Accountable Communities of Health	Stephanie Austin
Jonette Molyneux	North Sound Behavioral Health Organization	Substance Abuse and Mental Health Services Administration (SAMHSA)
Joseph Foster	Northwest Natural	Sysco
Joseph Rakoski	Northwest Premier Investments - Papa Murphy's	Teri Giles
Judy Hooyen	Open House Ministries	The Columbian
Kaiser Permanente	Opsahl Dawson CPA	Thurston Mason Behavioral Health Organization
Kaiser Permanente Surplus Warehouse	Pacific County Health and Human Services	Todd and Jill Klantchnek
Kareen Mills	PeaceHealth Engagement Planning Team	Tom and Ann Zelenka
Keith Wells	PeaceHealth Foundation	Tom Breitenbauch and Trista Wolles
Kelly Jones	Premera Blue Cross	Tonia Martin
Kenneth Tellup	Providence Health Plans	Victor Boomer-Jenks
Key Bank	Rebecca Schryvers	Victoria Nita
Kristine Lobb	Richard Aeschlimann	Washington State Combined Fund Drive
Kroger - Fred Meyer	Richard Hart	Washington State Department of Commerce
Krysta Pennington	Riverview Community Bank	Washington State Department of Early Learning
Landerholm, PS	Robert A Poole	Washington State Department of Health
Laurie Gordon	Rusty and Kathy Williams	Washington State Department of Social and Health Services
Liberty High School ASB	Salon 10/10	Whitney Howard
Liberty Mutual Foundation	Salvation Army	Willapa Community Network/Road to Resiliency
Life Vest Inside	Sam Gunn	Zachary and Vasiliki Stoumbos
Lifeline Alumni Committee	Samuel Rosenthal	
Linda Poland	Sandy Berger	
Maraiah Wenn Eslinger	Sandy Parkin	
Maria Calvert	Sans Midman Furniture	
Marika Wolfe		
Mark Vierck		

2019 TIMELINE

JANUARY

Received grant to expand medication assisted treatment in Whatcom and Skagit Counties



MARCH

Opened outpatient location in Mt. Vernon, WA



APRIL

Implemented behavioral health support online app called **myStrength** for use by patients and staff



JULY

Received a **three year accreditation** renewal from CARF



MAY

Held our 2nd annual fundraising event *A Light in the Storm*



MAY

Separated our substance use disorder residential program into **two substance use disorder residential programs**: a 44 bed mens program and a 16 bed womens program



SEPTEMBER

Held first **Camp Mariposa** for children effected by family substance use



SEPTEMBER

Purchased a single-family home to be used as a recovery residence for women



2019 AWARD WINNERS



Being able to open up about myself, my experiences, how I struggle in several areas in my life; being able to connect and relate with a counselor one-on-one and in group sessions, I know I'm not alone.

- Former Patient



DR. JOHN HART

**Community Partner Award
2019 Lifeline Connections**



**ERIC MCNAIR-
SCOTT**

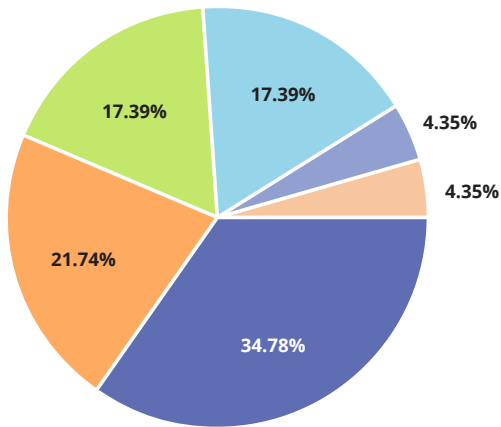
**The John Cox Award of Excellence
2019 Lifeline Connections**

2019 STATISTICS



677

Total **myStrength** users



MYSTRENGTH SUPPORT APP AREAS THAT INDIVIDUALS UTILIZED:

- Drugs, Alcohol
- Depression
- Anxiety
- Mindfulness
- PTSD
- Stress



1055

Hours of community outreach



425

Patients that received services via **Telemedicine**



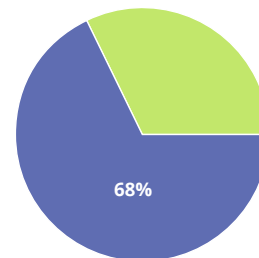
82%

Of employees report job satisfaction

Total Patients Served: 5,449



Males Served: 57% Females Served: 42%



Individuals served who were between the ages of 30 and 64.



DIANA'S STORY



The starting point of my journey likely began when I was around 25 years old. I had just had a baby and was greatly affected by post-partum depression—I only truly discovered what it was much later in life. My addiction started off as a monthly occurrence, and then gradually

increased to the point of being all day, every day. Methamphetamine and alcohol were taking over my life by this point. By the end of it, I had lost both of my parents, my friends, housing, jobs, everything. I lost myself.

What truly began my road to recovery was when my fiancé passed away in October of 2018. For a whole month, I mourned my loss and closed myself away. Afterwards, I decided that it was finally time to get the help I needed. My daughter then told me about a place in Vancouver, WA called Lifeline Connections. I looked it up and saw that it had a top rating for recovery. Immediately, I grabbed a plane from California, and promptly entered their

Detox program, and then transitioned to Residential a few days later.

I learned so much about myself and addiction while at Lifeline, receiving more help and support than I thought possible. After finishing Residential and entering Outpatient, my counselor mentioned the Business Ventures Connections Café Program, where I was interviewed and hired right away. Being here has given me life skills, connections, awareness, and so much more. My life has turned completely around for the better. I am finally a whole person again. I have my family back, my career is on track, and I have the greatest friends and support system imaginable.

“ Lifeline Connections changed my life, and it can change yours too. - Diana

STATEMENT OF FINANCIAL POSITION

JUNE 30, 2019

ASSETS

Cash and cash equivalents	\$1,711,816
Accounts receivable	\$3,624,271
Investments	\$2,380,174
Prepaid expenses and other	\$49,908
Property and equipment, net of accumulated depreciation	\$2,520,717
Total Assets	\$10,286,886

LIABILITIES

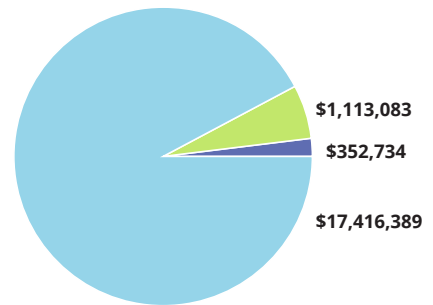
Accounts payable	\$122,401
Accrued payroll and related payables	\$880,347
Note payable	\$1,646,261
Total Liabilities	\$2,649,009

NET ASSETS **\$7,637,877**

TOTAL LIABILITIES AND NET ASSETS **\$10,286,886**

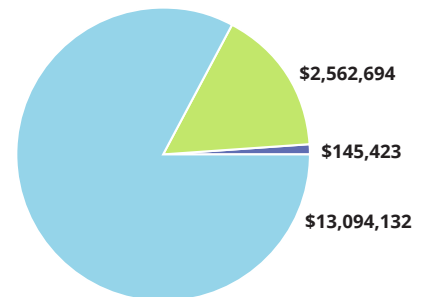
FUNDING SOURCES

- Government program revenues
- Patient Fees
- Contributions and other incomes



ANNUAL EXPENSES

- Program Services
- Administration
- Fundraising





I felt like I was greeted well into my recovery and I was pushed into the right direction

- Former Patient

WITHDRAWAL MANAGEMENT PROGRAMS

DETOXIFICATION PROGRAM

Lifeline provides a medication-assisted detoxification program to help patients attain mental and physical stability without harmful side effects. Detoxification is a 1-5 day inpatient stay, where patients are assisted by our medical team of doctors and nurses as well as caring support staff.

We provide compassion and are dedicated to helping our patients reach their goal of sobriety. Our detoxification program's mission is to provide a safe space for individuals to detox from harmful substances while providing individuals an opportunity to continue on into behavioral health treatment services.

SOBERING SERVICES PROGRAM

The Sobering Unit can serve as the "front door" to sobriety in getting help with addiction. This unit offers persons over the age of 18 a safe environment in which to overcome the immediate effects of alcohol and/or other drug intoxication. This program serves as a diversion from jail and the local emergency departments.

length of stay. Admission is based on a brief assessment upon arrival. No referral is required. The goal is to maximize the "window of opportunity" in which an individual might be most amenable to make life changes.

The service operates free of charge to Washington State residents and is a 26 bed inpatient program, which is open 24 hours a day seven days a week with a maximum 12 hours

The Sobering Urgent Response Vehicle (SURV) works with local law enforcement, emergency medical and local hospitals to coordinate the pickup of individuals and transport them back to the Sobering Unit.



THESE PROGRAMS AVAILABLE IN:

Clark County



SUBSTANCE USE DISORDER RESIDENTIAL PROGRAMS

MEN'S AND WOMEN'S RESIDENTIAL PROGRAM.....

After an individual has safely detoxed from drugs and/or alcohol they are encouraged to continue treatment into our residential program. The goal of this program is to provide individual, group and family counseling and support to help individuals learn skills to live a substance-free life. This

program lasts 30-45 days on average. Patients enjoy an environment that includes community access and structure to help them build life skills. Our residential programs are separated by gender. Our men's program is a 44 bed program and our women's program is a 16 bed program.

PREGNANT AND PARENTING WOMEN'S PROGRAM.....

This is a long-term residential, 3 to 6 months, 17 bed program which allows mothers to keep their children, birth to five, with them during their substance use treatment. We welcome women who are in many different stages of parenting and

support them as they deliver their baby, increase parenting knowledge, obtain visitation and/or custody, and embrace motherhood. We offer family therapy, encourage family involvement, and provide mental health support.



THESE PROGRAMS AVAILABLE IN:

Clark County



The people who helped me were prompt and clear. I felt welcome and treated with care and concern and given information that was helpful.

- Former Patient



SUBSTANCE USE DISORDER OUTPATIENT PROGRAMS

Outpatient treatment includes individual and group therapy sessions; the intensity of sessions depends on the individual's needs from weekly to monthly meetings. During sessions patients are educated on relapse prevention and coping

skills amongst many other tools to help adjust and continue a substance free lifestyle. The goal of this program is to help patients achieve and maintain sobriety, and reintegrate into their communities.

MEDICATION ASSISTED RECOVERY

Patients who are enrolled in our Medication Assisted Recovery Program have the option of being prescribed medication to help with their opioid addiction or alcoholism. In Lifeline's Medication Assisted Recovery program a variety

of medications are used, including Suboxone® and Vivitrol®. These medications help individuals gain stability in their life so they can engage in therapy where new life skills are taught and learned.



THIS PROGRAM AVAILABLE IN:

Clark, Grays Harbor, Pacific, Lewis, Skagit and Whatcom Counties

DEAF AND HARD OF HEARING OUTPATIENT PROGRAM

Lifeline's Deaf and Hard of Hearing Outpatient Program is one of only a handful in the nation. Treatment for drug and alcohol addiction is provided using American Sign Language.

Outpatient services include group sessions for anger management, coping skills, and relapse prevention. Treatment is experienced with other individuals in the deaf community.



THIS PROGRAM AVAILABLE IN:

Clark County



MENTAL HEALTH PROGRAMS

MENTAL HEALTH

Individual counseling, group therapy, case management, peer support, and medication management provide hope for individuals struggling with a mental health condition. Individuals struggling with a mental health condition can and do gain stability through the use of effective therapy.



THIS PROGRAM AVAILABLE IN:

Clark, Grays Harbor, Pacific, Lewis, Skagit and Whatcom Counties

OFFENDER RE-ENTRY COMMUNITY SUPPORT (ORCS)

The ORCS program provides ongoing support for individuals who are transitioning from prison whose crime was violent and exacerbated by their mental health condition. The program offers assistance with housing and basic needs for up to 5 years so long as the patient remains active in mental health services. Engagement begins prior to release in order to make a strong transition plan and to build rapport.



THIS PROGRAM AVAILABLE IN:

Clark and Pacific Counties



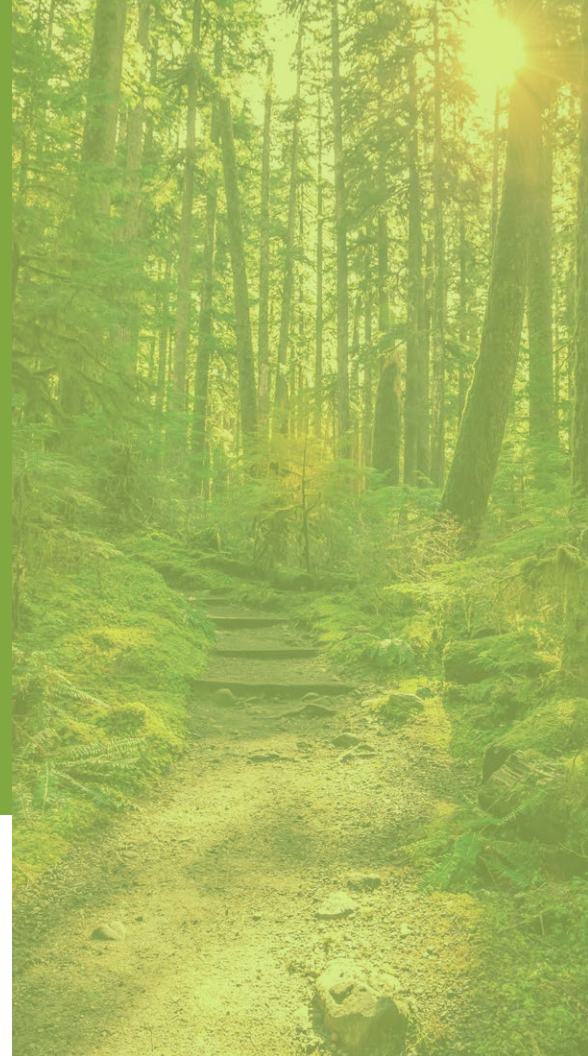
The program has educated me and distilled in me the necessary principles and information to help me recover and abstain from drugs.

- Former Patient



Lifeline has never given up on me even though they should have and I owe you guys and everyone here my life. You have saved me in more ways than one.

- Former Patient



THERAPEUTIC SPECIALTY COURTS

Through a community partnership with the Clark County Superior and District court systems, individuals who have been accepted into the adult drug court, substance abuse court, family treatment court, or the juvenile drug court program are offered an opportunity to participate in an intensive program for a minimum of one year.

Part of this program is receiving treatment at Lifeline Connections instead of going to jail and/or prison. Lifeline Connections' clinicians provide substance use disorder treatment. Case management services are also provided to assist individuals in successfully graduating from the court program and gaining access to community resources.



THIS PROGRAM AVAILABLE IN:

Clark County

PRIMARY SUBSTANCES USED

1

ALCOHOL

2

METHAMPHETAMINE

3

HEROIN

4

MARIJUANA/HASHISH

COMMUNITY BASED PROGRAMS

CAMP MARIPOSA

Camp Mariposa is a year-round program that serves youth ages 9-12 who have been affected by the substance use of a loved one. Lifeline Connections has partnered with the Eluna Network, a nationwide organization, to host the thirteenth Camp Mariposa, Camp Mariposa of SW Washington. Serving a capacity of 36 youth throughout the year, Camp Mariposa of SW Washington provides opportunities for youth to connect with peers who have experienced similar adversities and mentors who are enthusiastic to offer their support and kindness throughout camping weekends. Additional family

activities are also provided between the bi-monthly camping weekends that engage the entire family and the mentors in fun, outdoor, and even educational events. Campers reflect on how they have enjoyed visiting with a therapy alpaca, participating in archery, and how they now feel they have someone to talk to at camp about their feelings. The experience that this camp provides its young campers creates long lasting positive influences that will affect them long into adulthood.

COMET

COMET is an assertive community treatment program that operates in Clark County and provides intensive, community-based services to individuals with severe mental illness and substance use disorders. We offer individual, group,

peer support, medication management, nursing, housing, employment, and case management services on a 24 hour basis to help adults gain and maintain their stability.

EXPANDED COMMUNITY SUPPORT (ECS)

Our ECS team provides behavioral support to adults residing in adult family home placements across Clark County. We offer training and collaboration with the providers and work to help manage challenging behaviors which can jeopardize the

successful placement of a patient in a new home. Last year we provided services to 57 adults with an average age of 59 years old.

JAIL SERVICES

Jail transition services provide individuals that are currently incarcerated in the Clark County Jail with services that helps them transition to mental health programs upon release. Staff engage referred individuals while incarcerated and generally pick them up on release day to assist in the required activities to set them up for success.

The Jail Re-Entry Program enables those individuals currently incarcerated in the Clark County Jail to have access to a substance use disorder assessment and linkage to community resources once they are discharged. The jail re-entry staff member goes into the jail to provide an assessment and provides referrals for treatment resources.

SCHOOL-BASED PROGRAMS

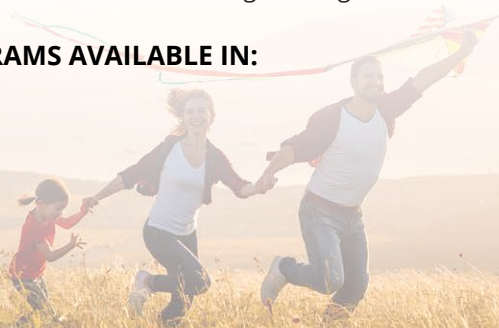
The behavioral health school based programs provide individual therapy to students that the prevention specialist at the school has identified as being in need of behavioral health services. Often times the students are dealing with high levels

of stress and family conflicts. The students are able to connect with the therapist throughout their school day/week making for easier access of behavioral health services.



THESE PROGRAMS AVAILABLE IN:

Clark County



RECOVERY SUPPORT PROGRAMS

SUPPORTIVE EMPLOYMENT SERVICES.....

Our Supportive Employment program is an approach to vocational rehabilitation that emphasizes assisting people in their efforts to achieve steady, meaningful employment in mainstream competitive jobs. The employment support process begins with a thorough assessment of the individual's skills, strengths, and interests and identifies the individual's work preferences and obstacles to gain or retain employment. An individualized job search and support plan is developed to empower the person in their recovery with their goal to achieve stable employment. The benefits of employment for people in recovery include increased income, improved

self-esteem, increased social and quality of life, better control of symptoms, reduced substance use, and reduced hospitalization or incarceration.

Our business venture, Connections Café and Catering (CCC), is a business started for the purpose of hiring individuals who have a behavioral health condition and have either completed or who are still engaged in treatment services. CCC helps individuals develop job skills and provides them with much needed income while they start on the road to long-term recovery.

SUPPORTIVE HOUSING SERVICES.....

Our Supportive Housing program is assisting people with behavioral health conditions who are also experiencing homelessness or are transitioning out of institutional settings, as well as people with a behavioral health condition. A Supportive Housing Specialist helps individuals to prepare, move into and maintain permanent housing. The housing support process begins with a thorough assessment of individual's housing needs and identifies the individual's housing preferences and obstacles to access housing. An individualized housing placement and support plan is

developed to empower the person in their recovery with their goal to obtain stable housing.

The Recovery Residence is for individuals in recovery from substance use disorders. This single family home gives a helping hand to individuals in recovery who need housing supports for their success.

Individuals who meet the eligibility requirements for residency are offered a month-to-month lease with affordable rent.

RECOVERY RESOURCE CENTER.....

The Recovery Resource Center (RRC) is a program that helps individuals in early and long term recovery sustain and strengthen their recovery. The RRC serves as a location for self-

help meetings and education classes. The RRC has a computer lab and a case manager on-site to assist individuals. The RRC also sells recovery related books and merchandise.



THESE PROGRAMS AVAILABLE IN:

Clark County

PEER SUPPORTS/RECOVERY COACHING.....

Recovery Coaching is where professional peers are linked with individuals enrolled in our substance use disorder outpatient program. Through the process of Recovery Coaching, patients deepen their learning, improve their performance, and enhance their quality of life. In each meeting, the patient chooses the focus of conversation, while the coach listens and contributes observations and questions. This interaction

creates clarity and moves the patient toward action. Recovery Coaching accelerates the patient's progress in recovery by providing greater focus and awareness of choices, actions, and responsibility. Coaching concentrates on where patients are now and what they are willing to do to enjoy a better tomorrow.



THIS PROGRAM AVAILABLE IN:

Clark, Grays Harbor, Pacific, Lewis, Skagit and Whatcom Counties



OTHER PROGRAMS

HEALTH HOME SERVICES

Health Homes is not a place, but a set of services to provide care coordination for high cost/high risk Medicaid patients in Washington. Eligible patients have chronic health conditions including physical health conditions (e.g. diabetes, cancer, HIV) and/or behavioral health conditions (e.g. a mental health

condition or substance use disorder). Health Homes is a service offered through a partnership between the Healthcare Authority, Department of Social and Human Services, Medicaid Managed Care Organizations and Care Coordination Organizations like Lifeline Connections.



THIS PROGRAM AVAILABLE IN:

Clark County

ALCOHOL DRUG AND INFORMATION SCHOOL

Alcohol drug and information school (ADIS) are a set of classes geared to educate individuals around the harmful effects of

alcohol and drug abuse. Many individuals are court mandated to attend these classes after a DUI or DWI offense.

PROBLEM GAMBLING

Individuals who struggle with problem gambling can receive individual and family therapy to help them get their lives back on track. Problem gambling treatment provides individuals

with the skills and tools they need to overcome their gambling addiction and live a fulfilling life.



THESE PROGRAMS AVAILABLE IN:

Clark and Whatcom Counties



HOW YOU CAN HELP

At Lifeline Connections, our doors are open to all who struggle with substance use or mental health conditions—regardless of ability to pay.

**Visit our site for
more information**

[lifelineconnections.org/
how-you-can-help/](https://lifelineconnections.org/how-you-can-help/)



It's never too late to call.

1.800.604.0025

www.lifelineconnections.org

info@lifelineconnections.org

Facebook:

www.facebook.com/lifelineconnections.org

Instagram:

[@lifelineconnections](https://www.instagram.com/lifelineconnections)